

Connect Your Embosser Through Your PC's USB Port



WINDOWS 2000 and XP (Windows 98 on reverse side)

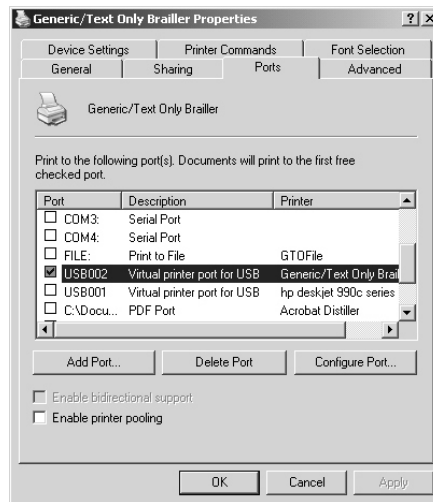
1. Turn your embosser OFF. Connect the large end of the adapter, Belkin USB-to-parallel adapter #F5U002, to your embosser's parallel port.
2. Go to your PC and connect the small end of the adapter to an unused USB port on your computer.
3. Windows will recognize the adapter and automatically install the proper drivers to create a "virtual port."
4. You may need to add a new printer to your system to work with your new "port." If you plan to change an existing Generic/Text Only driver from an original port to the new USB connection, you can skip this step completely and go on to Step 5.

Return to your PC's desktop, and select Start/Control Panel/Printers. Select "Add Printer," and when Windows asks, choose "Manufacturer/Generic" and "Printer/Generic/Text Only," and select "next." If you are experienced in Braille, you probably have other copies of Generic Text/Only installed already. If so, be sure to select "Keep Existing Driver (recommended)" when Windows asks, and select "next."

On the next screen, a list of ports on your computer should appear. You might want to give this new printer a

different name for your own convenience, which Windows will permit you to type in on the next screen. Select "no" when Windows asks if you want to print a test page.

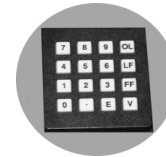
5. At the Printers section of Control Panel, select the Generic/Text Only printer you wish to direct through your USB port. Then go to File/Properties/Details. Under "Print to the following port", choose "USB00X (Virtual printer port for USB)," as shown below.



Embosser

Plug the wide end of the adapter cable into the embosser's parallel port.

Turn on the embosser and install paper and install paper in the tractors.



The keypad on the front or top of the embosser is how you tell the embosser what to do. Enter these commands on the keypad:

Keys

What They Mean

OL Go off-line.

0.1E Enter Menu 1 (PC menu).

1.0E Use these settings from now on and

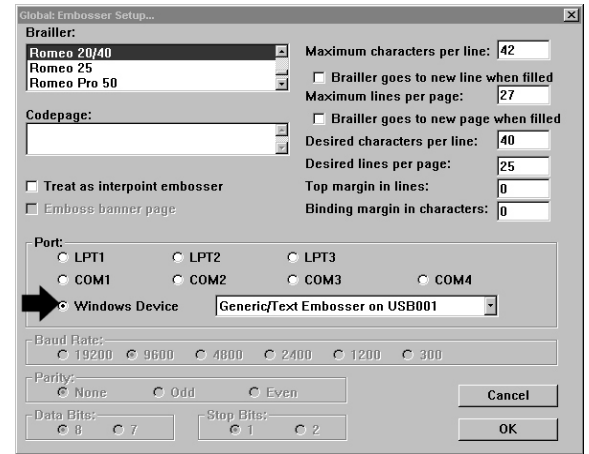
1.1E Change to these settings right now.

The embosser resets itself and will come back, ready to work with the new "parallel" port.

(OVER) →

4. DBT and Your New Adapter.

If you're one of the many people using the Duxbury Braille Translator to prepare Braille documents, here's how to make sure your new adapter is the embossing port for DBT. Start DBT and prepare your document. Before you emboss, go to Global Embosser Setup and, under Port, choose "Windows Device", then select your new USB/Parallel Port as shown, then choose "OK."



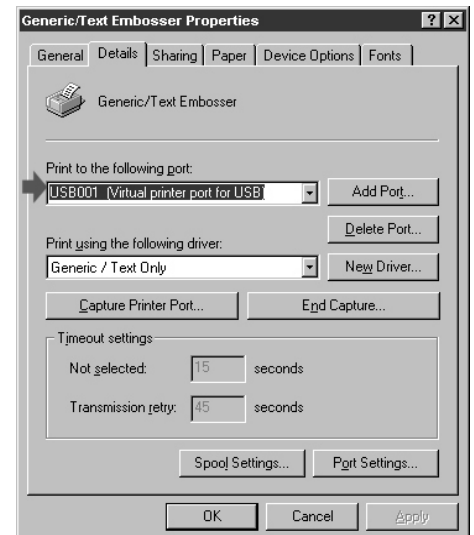
WINDOWS 98

1. Turn your embosser OFF. Connect the large end of the adapter to your embosser's parallel port.
2. Go to your PC and connect the small end of the adapter to an unused USB port on your computer.
3. Now, you need to add a new virtual port with the software that comes with the adapter. Windows 98 will detect the new cable, and the "New Hardware" wizard will appear. Insert the adapter's software CD into your CD-ROM drive. When the wizard asks, select "Search for the best driver for your device (Recommended)," then select "next", then "CD-ROM drive" as the source. Windows will find the software, which will be called a "USB printer device." Select "next." The wizard will finish this part of the installation.
4. Next, you may also need to add a new printer to your system to work with your new "port." If you plan to change an existing Generic/Text Only driver from an original port to the new USB connection, you can skip this step completely and go on to Step 5.

Return to your PC's desktop, and select Start/Settings/Printers. Select "Add Printer," and when Windows asks, choose "Manufacturer/Generic" and "Printer/Generic/Text Only," and select "next." If you are experienced in Braille, you probably have other copies of Generic Text/Only installed already, so be sure to select "Keep Existing Driver (recommended) when Windows asks, and select "next."

On the next screen, a list of ports on your computer should appear. If you see "USB001 (Virtual printer port for USB)" among them, great--choose that one and select "next." If not, choose "LPT1:" then "next." You might want to give this new printer a different name for your own convenience, which Windows will permit you to type in on the next screen. Select "no" when Windows asks if you want to print a test page.

5. Back at the Printers section of Control Panel, select the Generic/Text Only printer you wish to direct through your USB port. Then go to File/Properties/Details. Under "Print to the following port" you should see a new choice of port--"USB001 (Virtual printer port for USB)." But IF YOU DO NOT, don't worry. Just return to the Start Menu, choose Shut Down/Restart. After your computer restarts, repeat this step, but this time, the new USB "port" will be on the menu. Choose "USB001 (Virtual printer port for USB)."



Enabling Technologies

World's Leading Manufacturer of Braille Embossers

1601 NE Braille Place

Jensen Beach, FL 34957 USA

Phone: (772) 225 3687

Fax: (772) 225 3299

Toll-free phone in the US: (800) 777 3687

Toll-free fax in the US: (800) 950 3687

E-mail: enabling@brailier.com

Web: www.brailier.com